

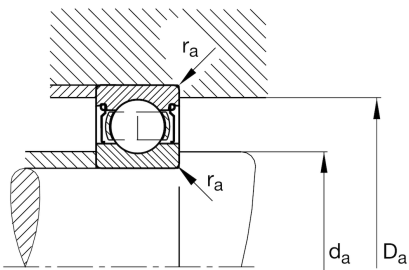
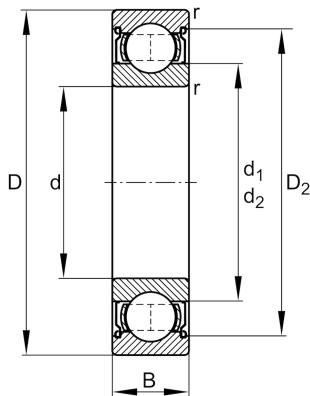
FAG

**6309-2Z**

Deep groove ball bearing

Schaeffler ID:  
0167235540000Deep groove ball bearing 63...-2Z, single  
row, shields, steel sheet metal cage

## Technical information

**Dimensions**

|            |          |                              |
|------------|----------|------------------------------|
| $r_{\min}$ | 1.5 mm   | Minimum chamfer dimension    |
| $D_2$      | 85.6 mm  | Caliber diameter outer ring  |
| $d_1$      | 62 mm    | Shoulder diameter inner ring |
|            | 0.844 kg | Weight                       |

**Main Dimensions & Performance Data**

|          |             |                                   |
|----------|-------------|-----------------------------------|
| $d$      | 45 mm       | Bore diameter                     |
| $D$      | 100 mm      | Outside diameter                  |
| $B$      | 25 mm       | Width                             |
| $C_r$    | 56,000 N    | Basic dynamic load rating, radial |
| $C_{0r}$ | 31,500 N    | Basic static load rating, radial  |
| $C_{ur}$ | 2,240 N     | Fatigue load limit, radial        |
| $n_G$    | 8,100 1/min | Limiting speed                    |
| $n_{gr}$ | 8,200 1/min | Reference speed                   |

**Mounting dimensions**

|             |        |                                      |
|-------------|--------|--------------------------------------|
| $d_{a\min}$ | 54 mm  | Minimum diameter shaft shoulder      |
| $D_{a\max}$ | 91 mm  | Maximum diameter of housing shoulder |
| $r_{a\max}$ | 1.5 mm | Maximum fillet radius                |

**Calculation factors**

|       |      |                    |
|-------|------|--------------------|
| $f_0$ | 12.9 | Calculation factor |
|-------|------|--------------------|

**Temperature range**

|            |        |                            |
|------------|--------|----------------------------|
| $T_{\min}$ | -20 °C | Operating temperature min. |
| $T_{\max}$ | 120 °C | Operating temperature max. |